



Dataloggers



Temperature • Humidity • Pressure • Current • Voltage • Light • Impulse





Kistock NEW RANGE



HVAC p.04



Laboratories p.07



Food industry p.08



Wireless p.10

Dataloggers



Temperature / Humidity / Pressure / Current / Voltage / Light / Impulse

1 Configure



Easy, user-friendly configuration with **KISTOCK** software. USB 2.0 connection.

2 Measure/Record



Install the **KISTOCK** and required probes to **measure** and **store** data.

3 Download



Connect **KISTOCK** or **KNT** Data recorder to your PC and download all measurements in a **few seconds**.

4 Process/Print/Save



Fast, easy analysis of your measurement data using graphs and tables built thanks to **KISTOCK** software.

Data processing software **KILOG**

Configuration of dataloggers

In **3 steps**, easily configure:

- your instrument
- your channels
- your recording



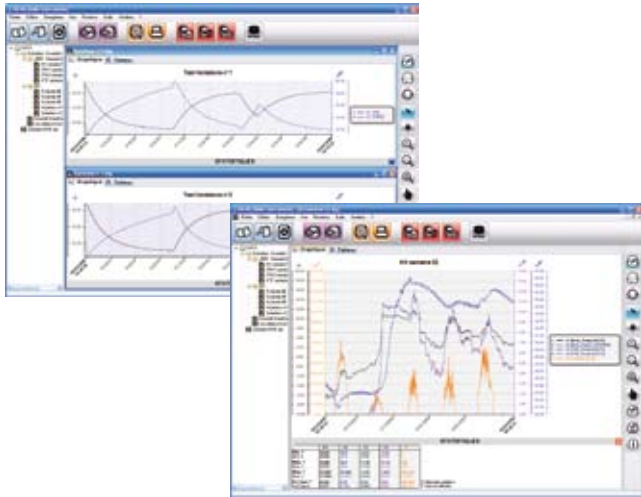
Data download

1 click and you can quickly download data from your **KISTOCK** or from the **KNT** data recorder.

- **automatic** save
- **archive** storage

Data processing

- creation of **graphs** and **tables**
- **automatic** calculations
- add calculation **functions**
- **export data** to a spreadsheet



KILOG CFR Data security

KILOG CFR is the **key software** for users who require traceability under the strict standards of **21 CFR part 11** standard. Security and integrity of **data** are **guaranteed** - no possibility to modify or tamper with data.



KILOG & KILOG CFR softwares are compatible with the former KISTOCK range.

Kistock **ACCESSORIES**

KNT data collector
for mobile data transfer



Anti-theft system
wall-mounting bracket

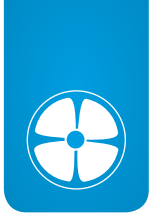


EN 12830 norm

KT 150 and **KT 250**, models dedicated to food industry, meet with requirements of **EN 12830 norm**. This certification is required for transportation, storage and distribution of refrigerated, frozen and deep-frozen food, and ice cream (see page 8-9).

Certification is done by an independent laboratory, **COFRAC** accredited.





Range for HVAC

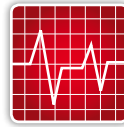
Class 110 Dataloggers

Easy use

Up to 3 parameters



1 line display or without display



Up to 16,000 record points



Temperature

Current/Voltage/Ammeter clamps



KT 110 I (internal measurement)

KT 110 A (internal measurement + 1 input for external probe)

Internal sensor

Temperature -40 to +70°C
Resolution 0.1°C

Memory

KT 110 I 12,000 pts
KT 110 A 16,000 pts



Humidity, temperature & light

KH 110 A (internal measurement)

Internal sensors

Humidity 5 to 95 %RH
Resolution 0.1 %RH

Light 0 to 10,000 lux
Resolution 1 lux

Temperature -20 to +70°C
Resolution 0.1°C

Memory 16,000 pts



Magnetic mounting



Range for HVAC



Class 210 Dataloggers



2-line display
or without display



20,000
record points

Multi-probe

Up to 5 parameters

Up to 4 external inputs



Temperature

Current/Voltage/Ammeter clamps



KT 210 A (internal measurement + 4 inputs for external probes)

Internal sensor

Temperature -40 to +70°C

Resolution 0.1°C



Humidity, temperature & light

Current/Voltage/Ammeter clamps

KH 210 A (internal measurement + 2 inputs for external probes)

KH 210 D (remote probe + 2 inputs for external probes)

Internal sensor

Humidity 5 to 95 %RH

Resolution 0.1 %RH

Temperature -20 to +70°C

Resolution 0.1°C

Light 0 to 10,000 lux

Resolution 1 lux

Remote probe

Humidity 5 to 95 %RH

Resolution 0.1 %RH

Temperature -20 to +80°C

Resolution 0.1°C





Range for HVAC

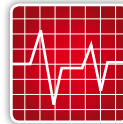
Class 310 Datalogger

Multi-probe

2 thermocouple external inputs



2-line display



100,000 record points



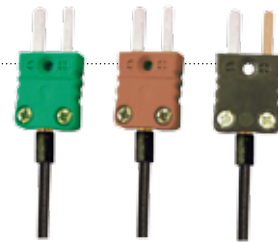
Thermocouple temperature



KTT 310 (2 inputs for external probes)

Thermocouple temperature

K	-200 to +1,000°C
J	-100 to +750°C
T	-200 to +400°C
Resolution	0.1°C



To prevent legionnaire's disease

Check of hot water Sanitary network



With **Velcro probes** or **spring clamp probes**, KTT 310 is a key instrument to control and monitor your **hot water / sanitary network**.



Thermometer Function

In addition to its datalogging function, KTT 310 allows you to perform **on-demand display of measurements**.

Range for Laboratories



Class 350 Dataloggers

Multi-probe

Pt 100 temperature probes

Up to 4 parameters



2-line display



100,000 record points



Pt 100 temperature
Current/Voltage/Ammeter clamps



KTR 350 (2 inputs for external probes)

Pt 100 remote probes
Temperature -100 to +400°C
Resolution 0.1°C

Thermometer Function



Humidity & Pt 100 temperature
Current/Voltage/Ammeter clamps

- KTH 350 A** (internal measurement + 1 input for external probe)
- KTH 350 P** (2 inputs for external probes - supplied with polycarbonate probe)
- KTH 350 I** (2 inputs for external probes - supplied with stainless steel probe)

Internal sensors

Humidity 0 to 100 %RH
Resolution 0.1 %RH

Temperature -20 to +70°C
Resolution 0.1°C

Stainless steel remote probe

Humidity 0 to 100 %RH
Temperature -40 to +180°C

Polycarbonate remote probe

Humidity 0 to 100 %RH
Temperature -20 to +120°C



Thermo-hygrometer Function



Range for Food industry

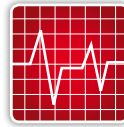
Class 150 Dataloggers

Easy use

Up to 3 parameters



1 line display or without display



Up to 16,000 record points



Temperature

Current/Voltage/Ammeter clamps

KT 150 I (internal measurement)

KT 150 A (internal measurement + 1 input for external probe)

Internal sensor

Temperature -40 to +70°C

Resolution 0.1°C

Memory

KT 150 I 12,000 pts

KT 150 A 16,000 pts



New



“Special long-time immersion” probes

see p.11



Mini temperature dataloggers



KT 20 G

Temperature -40 to +85°C

Memory 2,048 points

KT 20 T

Temperature 0 to +125°C

Memory 8,192 points

KT 20 L

Temperature -40 to +85°C

Memory 8,192 points

Range for Food industry



Class 250 Dataloggers

Multi-probe

Up to 5 parameters

Up to 4 external inputs



2-line display
or without display



20,000
record points



Temperature

Current/Voltage/Ammeter clamps



KT 250 I (internal measurement + 4 inputs for external probes)

Internal sensor

Temperature -40 to +70°C

Resolution 0.1°C



Humidity, temperature & light

Current/Voltage/Ammeter clamps

KH 250 A (internal measurement + 2 inputs for external probes)

Internal sensors

Humidity 5 to 95 %RH

Resolution 0.1 %RH

Light 0 to 10,000 lux

Resolution 1 lux

Temperature -20 to +70°C

Resolution 0.1°C





Wireless Range

NEW

Up to 100 devices in network

Remote configuration

Real-time monitoring

Up to 3-year autonomy



KILOG RF software

The new **KILOG-RF** software is dedicated to wireless KISTOCK dataloggers. It allows **configuration, data processing and setting of wireless dataloggers** (up to 100 dataloggers), for a real time monitoring.



Communication base



Wireless datalogger



Alarm box



Network extender

Kistock RF ACCESSORIES

Radiofrequency data collector



Data collector for mobile data transfer



Alarm box



Network extender



Communication test device

Wireless Range



Class 100 DATALOGGERS



1 or 2-line display
or without display

Easy use

Up to 4 parameters



Up to 16,000
record points



Temperature

KT 150-RF (internal measurement)

Internal sensor

Temperature -40 to +70°C
Resolution 0.1°C
Memory 12,000 pts



KIMO exclusivity



Pressure

KP 110-RF (internal measurement)
KP 111-RF (internal measurement)

Internal pressure sensor

KP 110 -1,000 to +1,000 Pa
KP 111 -10,000 to +10,000 Pa
Memory 12,000 pts



Temperature

Current/Voltage/Ammeter clamps

KT 110-RF (internal measurement + 1 input for external probe)

Internal sensor

Temperature -40 to +70°C
Resolution 0.1°C
Memory 16,000 pts



Wireless Range

Class 210 DATALOGGERS



2-line display
or without display

Multi-probe

Up to 5 parameters



20,000
record points



Humidity & temperature

Current/Voltage/Ammeter clamps



KH 210-RF A (internal measurement + 1 input for external probe)

KH 210-RF D (remote probe + 1 input for external probe)

Internal sensors

Humidity 5 to 95 %RH
Resolution 0.1 %RH

Temperature -20 to +70°C
Resolution 0.1°C

Remote probe

Humidity 0 to 100 %RH
Temperature -40 to +180°C



Current, voltage, impulse

Ammeter clamps

KTU 210-RF (2 inputs for external probes)

External inputs

Current 0 to 20 mA
Voltage 0 to 10 V

Ammeter clamps
0 to 20 A / 50 A / 100 A
200 A / 600 A



All datasheets

available on www.kimo.fr/kistock/



Class 310 DATALOGGERS



2-line display



20,000
record points

Multi-probe

Up to 4 parameters

2 external inputs



Pt 100 temperature

Current/Voltage/Ammeter clamps



KTR 310-RF (2 inputs for external probes)

Pt 100 remote probes

Temperature -100 to +400°C

Resolution 0.1°C



Thermocouple temperature

KTT 310-RF (2 inputs for external probes)

Thermocouple temperature

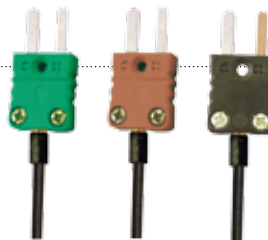
K -200 to +1,000°C

J -100 to +750°C

T -200 to +400°C

S 0 to +1,760°C

Resolution 0.1°C



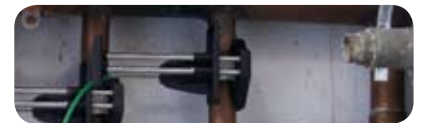


Probes



NTC temperature probes

For HVAC & wireless



Wire probes

KCF 2 N	Wire	PVC cable	-20 to +100°C
KCG 50 N	General use - stainless steel - 50 mm	PVC cable	-40 to +120°C
KCG 150 N	General use - stainless steel - 150 mm	PVC cable	-40 to +120°C
KCA 150 N	Ambient - stainless steel, perforated tip - 150 mm	PVC cable	-40 to +120°C
KCV 200 N	Velcro - length 200 mm	PVC cable	-20 to +90°C
KCP 150 N	Penetration - stainless steel - 150 mm	PVC cable	-40 to +120°C

With polycarbonate handle

KCG 150 PN	General use - stainless steel - 150 mm	PVC cable	-40 to +120°C
KCA 150 PN	Ambient - stainless steel, perforated tip - 150 mm	PVC cable	-40 to +120°C
KCP 150 PN	Penetration - stainless steel - 150 mm	PVC cable	-40 to +120°C

Current & voltage input cables

KGTJ 10 N	Voltage input cable	PVC cable	0 to 10 V
KCCJ 02 N	Current input cable	PVC cable	0 to 20 mA

Ammeter clamps

KPIJ xx N	Ammeter clamps	PVC cable	0 to 600 A
------------------	----------------	-----------	------------

For a wider choice of thermocouple probes for class 310 please contact us.



waterproof: splash proof



waterproof: long-time immersion

Pt 100 probes For laboratories & wireless



Wires

KRGA 50	General use - stainless steel - 50 mm	IP 65	Teflon® cable	-50 to +250°C
KRGA 150	General use - stainless steel - 150 mm	IP 65	Teflon® cable	-50 to +250°C
KRAM 150	Ambient - stainless steel, perforated tip - 150 mm		Teflon® cable	-40 to +120°C
KRVB 200	Velcro - length 200 mm		Teflon® cable	-20 to +90°C
KRPA 150	Penetration - stainless steel - 150 mm	IP 65	Teflon® cable	-50 to +250°C

With stainless steel handle

KPI3 150	Penetration - stainless steel - 150 mm	IP 65/68	Teflon® cable	-50 to +250°C
KPIC3 150	Bent penetration - stainless steel - 150 mm	IP 65/68	Teflon® cable	-50 to +250°C
KT13 100	Penetration with T-handle - stainless steel - 100 mm	IP 65/68	Teflon® cable	-50 to +250°C
KTBI3 100	Corkscrew twist - stainless steel - 100 mm	IP 65/68	Teflon® cable	-50 to +250°C

Current & voltage input cables

KCTD 10 B	Voltage input cable	PVC cable	0 to 10 V
KCCD 02 B	Current input cable	PVC cable	0 to 20 mA

NTC probes - IP 65 For food industry & wireless



Wires

KCF 2 B	Wire		PVC cable	-20 to +100°C
KCG 50 B	General use - stainless steel - 50 mm	IP 65	PVC cable	-40 to +120°C
KCG 150 B	General use - stainless steel - 150 mm	IP 65	PVC cable	-40 to +120°C
KCA 150 B	Ambient - stainless steel, perforated tip - 150 mm		PVC cable	-40 to +120°C
KCV 200 B	Velcro - length 200 mm		PVC cable	-20 to +90°C
KCP 150 B	Penetration - stainless steel - 150 mm	IP 65	PVC cable	-40 to +120°C

With stainless steel handle

KPI 150	Penetration - stainless steel - 150 mm	IP 65/68	PVC cable	-40 to +120°C
KPIC 150	Bent penetration - stainless steel - 150 mm	IP 65/68	PVC cable	-40 to +120°C
KPTI 100	Penetration with T-handle - stainless steel - 100 mm	IP 65/68	PVC cable	-40 to +120°C
KPTBI 100	Corkscrew twist - stainless steel - 100 mm	IP 65/68	PVC cable	-40 to +120°C

Current & voltage input cables

KCTJ 10 N	Voltage input cable	PVC cable	0 to 10 V
KCCJ 02 N	Current input cable	PVC cable	0 to 20 mA



Distributed by:



KI MISURE Srl
Via Bologna 50 - 10154 Torino
info@kimisure.it - www.kimisure.it